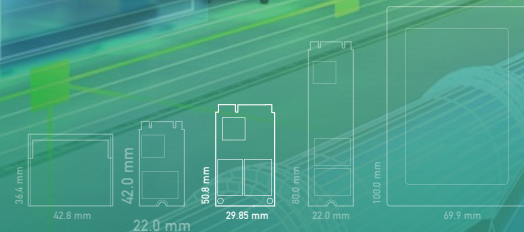


E21C

- Surveillance / Edge AI • Factory Automation • Smart Retail
- Military / Defense • Gaming • Healthcare



SATA III 6Gb/s | mSATA

addlink E21C mSATA SATAIII SSDs use industrial grade controller and is equipped with 112 Layer 3D TLC (BICS5) NAND flash to deliver low power consumption and high-performance SSD, making it the best industrial storage solution for embedded system. addlink E21C is compliant with TCG OPAL for data security and supports the latest LDPC ECC, advanced wear leveling, and over-provision technology. It also optionally supports three low power consumption modes to ensure SSD can extend battery life efficiently. The E21C SSD is available in 64GB to 2TB capacities and comes with addlink's Toolbox software for easy management and real-time monitoring. It is an ideal solution for surveillance, edge AI, factory automation, smart retail, military, gaming and healthcare applications.

Specifications

| | |
|-------------------------------|--------------------------------------------------------------------------------------------------------|
| Form Factor / Interface | mSATA / SATA III |
| Connector | Mini PCIe with SATA Pin out |
| Flash | 3D TLC |
| Capacity | 64GB~2048GB |
| Sequential Read/Write (up to) | R: 550 MB/s, W: 510 MB/s |
| Random Read/Write (up to) | R: 36.5k IOPS, W: 57.5k IOPS |
| Supply (V) | 3.3V + -5% |
| Max. Endurance | 2,900 TBW (2TB) |
| Max. Power Consumption (R/W) | 1.45/1.75 W |
| Max. Idle Power Consumption | 0.21W |
| Shock / Vibration | 1500G0-P/0.5ms duration, 20Hz~80Hz/1.52mm 80Hz~2000Hz/20G |
| Operating Humidity | 5%-95% RH, non-condensing |
| Operating Temperature | Standard: 0°C to 70°C, Industrial: -40°C to 85°C |
| MTBF | 2.5M hrs |
| Security (Optional) | TCG OPAL 2.0 Compliant |
| Technologies | LDPC ECC, Thermal Throttling, SLC Cache, Wear Leveling, Bad block management, TRIM command, S.M.A.R.T. |

Features

- AES-256-bit Encryption & TCG-OPAL 2.0 Compliant*
- Support DEVSLP Mode*
- Low Power Consumption (Max. Read/Write <1.75W)
- LDPC with RAID ECC
- Thermal Protection Mechanism
- SMART Toolbox for SSD health monitoring
- Wide-temperature support: -40°C to 85°C

* It's optional function and support by specific firmware

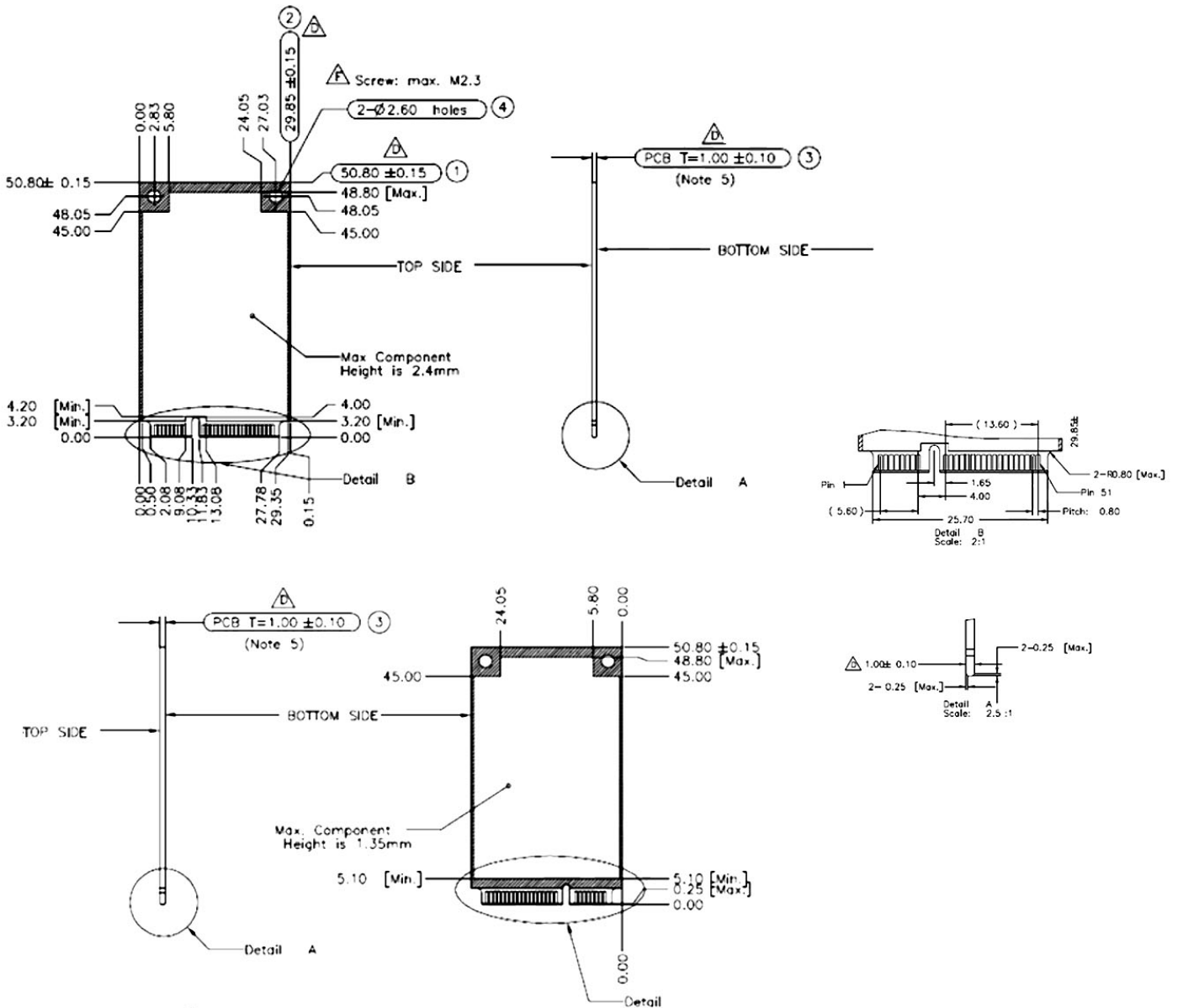


| | | | | | | | |
|----------|---------------|--------------|--------------|---------|--------------------------|-------------|---------------|
| | | | | | | | |
| TCG OPAL | Write Protect | Secure Erase | Crypto Erase | ToolBox | Advance Thermal Solution | DEVSLP Mode | Destroy Erase |
| ○ | ○ | ● | ○ | ● | ○ | ○ | ○ |

● Default Implemented ○ On Request - Not Available

Dimensions

- 50.8mm (L) x 29.85mm (W) x 4mm (H)



Ordering Information

| Capacity | Commercial (0°C~70°C) | Industrial (-40°C~+85°C) |
|----------|-----------------------|--------------------------|
| 64GB | ad64GBE21CTC | ad64GBE21CTA |
| 128GB | ad128GBE21CTC | ad128GBE21CTA |
| 256GB | ad256GBE21CTC | ad256GBE21CTA |
| 512GB | ad512GBE21CTC | ad512GBE21CTA |
| 1TB | ad1TBE21CTC | ad1TBE21CTA |
| 2TB | ad2TBE21CTC | ad2TBE21CTA |

