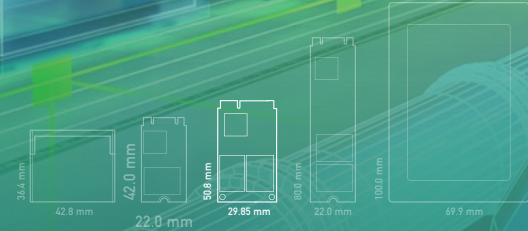


# E21CP

- Surveillance / Edge AI • Factory Automation • Smart Retail
- Military / Defense • Gaming • Healthcare



## SATA III 6Gb/s | mSATA

addlink E21CP mSATA SATAIII SSDs use industrial grade controller and is equipped with Kioxia BIC55 pSLC NAND deliver better endurance (up to 13,000 TBW) and higher performance SSD, making it the best industrial storage solution for embedded system. addlink E21CP is compliant with TCG OPAL for data security and supports the latest LDPC ECC, advanced wear leveling, and over-provision technology. It also optionally supports three low power consumption modes to ensure SSD can extend battery life efficiently. The E21CP SSD is available in 32GB to 256GB capacities and comes with addlink's Toolbox software for easy management and real-time monitoring. It is an ideal solution for surveillance, edge AI, factory automation, smart retail, military, gaming and healthcare applications.

## Specifications

Form Factor / Interface	mSATA / SATA III
Connector	Mini PCIe with SATA Pin out
Flash	pSLC
Capacity	32GB~256GB
Sequential Read/Write (up to)	R: 550 MB/s, W: 510 MB/s
Random Read/Write (up to)	R: 49.5K IOPS, W: 78.5k IOPS
Supply (V)	3.3V + -5%
Max. Endurance	13,000 TBW (256GB)
Max. Power Consumption (R/W)	1.32/1.2W
Max. Idle Power Consumption	0.175W
Shock / Vibration	1500G0-P/0.5ms duration, 20Hz~80Hz/1.52mm 80Hz~2000Hz/20G
Operating Humidity	5%-95% RH, non-condensing
Operating Temperature	Standard: 0°C to 70°C, Industrial: -40°C to 85°C
MTBF	2.5M hrs
Security (Optional)	TCG OPAL 2.0 Compliant
Technologies	LLDPC ECC, Thermal Throttling, SLC Cache, Wear Leveling, Bad block management, TRIM command, S.M.A.R.T.

## Features

- High Endurance pSLC Flash Technology (up to 13,000TBW -256GB)
- AES-256-bit Encryption & TCG-OPAL 2.0 Compliant\*
- Support DEVSLP Mode\*
- Low Power Consumption (Max. Read/Write <1.32W)
- LDPC with RAID ECC
- Thermal Protection Mechanism
- SMART Toolbox for SSD health monitoring
- Wide-temperature support: -40°C to 85°C

\* It's optional function and support by specific firmware



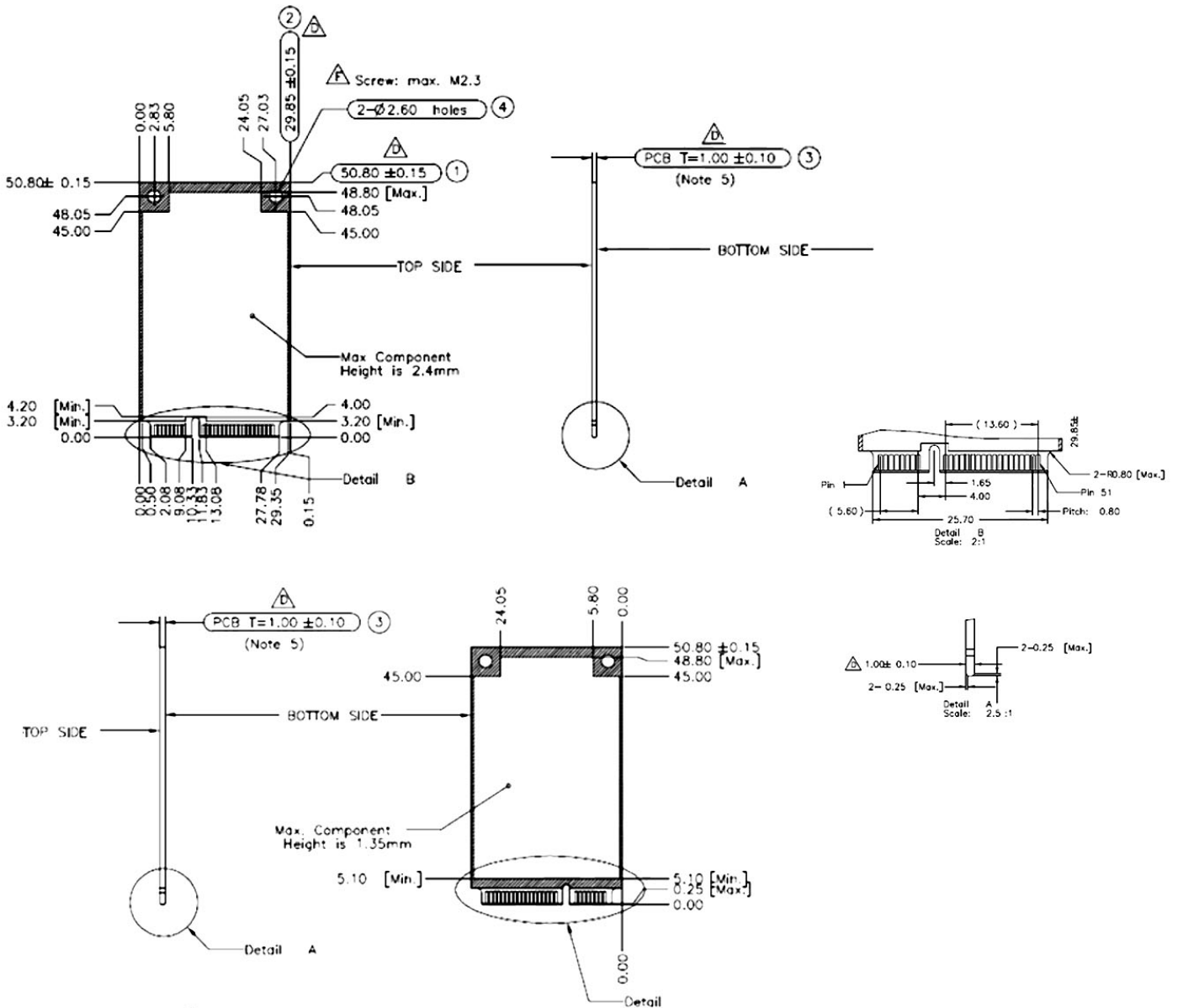
TCG OPAL	Write Protect	Secure Erase	Crypto Erase	ToolBox	Advance Thermal Solution	DEVSLP Mode	Destroy Erase
○	○	●	○	●	○	○	○

● Default Implemented ○ On Request - Not Available

**addlink**  
Industrial

# Dimensions

- 50.8mm (L) x 29.85mm (W) x 4mm (H)



## Ordering Information

Capacity	Commercial (0°C~70°C)	Industrial (-40°C~+85°C)
32GB	ad32GBE21CPC	ad32GBE21CPA
64GB	ad64GBE21CPC	ad64GBE21CPA
128GB	ad128GBE21CPC	ad128GBE21CPA
256GB	ad256GBE21CPC	ad256GBE21CPA

